

HYDRA 1665



ESCORTS
CONSTRUCTION EQUIPMENT

Escorts Pick-n-Carry Crane 16T Capacity

- 16T Crane With 65 ft Boom
- Carraro Transmission & Rear Axle
- Max. Boom Height Attained 19m/21m With Fly Jib
- Travel Speed Of 38 km/hr
- Creep Speed Of 1.7 km/hr At Rated rpm
- Heavy Duty Winch Of 12T Capacity
- Slotted Boom With Rope Compensation
- Safe Load Indicator (optional)



THE POWER OF EXTRA CAPACITY, REACH & STABILITY

PICK-n-CARRY CRANE HYDRA-1665

Specifications:

ENGINE

Make & Model Kirloskar model 4R1040TC, 4 cylinder water cooled BS-III (CEV) compliant diesel engine developing 76 HP (56 KW) @ 2200 rpm

TRANSMISSION

Type Carraro Synchro - Shuttle Transmission with Torque Converter. Speed - 4 forward & 4 reverse, Full Synchronesh in all gears, with electrically operated forward & reverse shuttle, provide on-the-go shifting in all gears.

Travel Speed Max speed 38 Kmph (unladen)

Creep Speed 1.7 kmph at rated rpm

Clutch Clutchless operation

STEERING

Type Articulated power steering, hydraulically controlled through 2 double acting jacks

Articulation up to 56° on either side

Turning Radius 6.2 m

OPERATIONAL TIMINGS (no load at rated engine RPM)

Steering (lock to lock) 6 - 10 sec

Boom Raising 19 - 24 sec

Boom Lowering 10 - 15 sec

Telescoping

Extension in 12 - 15 sec

Extension out 17 - 20 sec

Hoist Line Speed 50m/min

BRAKES

Front Wheel Pneumatically assisted hydraulic brake.

Rear Wheel Pneumatically assisted hydraulically actuated dual line self adjusting oil immersed, multidisc on rear axle, well protected from dirt, water etc, requiring no maintenance.

Parking Hand operated caliper disc brake on rear axle

TRACK

Front 1920 mm

Rear 1680 mm

TYRES

Front 12.00 X 20 - 18PR (4 nos.), inflation pressure 115 PSI

Rear 14.00 X 25 - 20PR (2 nos.), inflation pressure 69 PSI

BOOM

Luffing Angle Upto 63°

Telescoping 4 part box type boom, 3 part hydraulically powered & fully synchronised, 4th part power extended & manually pinned

Type Rope compensated & synchronised.

Derricking Through double acting jacks.

HOIST MECHANISM

Hoist Hydraulic winch (reputed make) of 12T capacity with six fall snatch block. Rope dia 13 mm

HYDRAULIC SYSTEM

Pump Vane type hydraulic pump.

Control Valve 4 spool control valve with built in pressure relief valve and precision control.

Hydraulic Filter Suction line has a 100 mesh inline strainer while return line has 10 microns full flow filter.

ELECTRICAL SYSTEM

Type 12V Single battery, Negative earth

CAPACITIES

Fuel Tank 70 Ltrs.

Hydraulic Tank 130 Ltrs.

OPERATING WEIGHT(Kg)

13820 Kg

OVERALL DIMENSIONS

Length : 10900 mm

Width : 2600 mm

Height : 3470 mm

SAFETY SYSTEM

Overload audio warning system.

Rope Compensation for auto levelling

Safety brakes on hoist.

Hose protection failure device.

Cylinder guard for protection.

STANDARD ACCESSORIES

• All weather cabin • Lift Cylinder Guard • Front Bumper

• Reflectors • Rear View Mirror • Turn & Reverse lamp

OPTIONAL ACCESSORIES

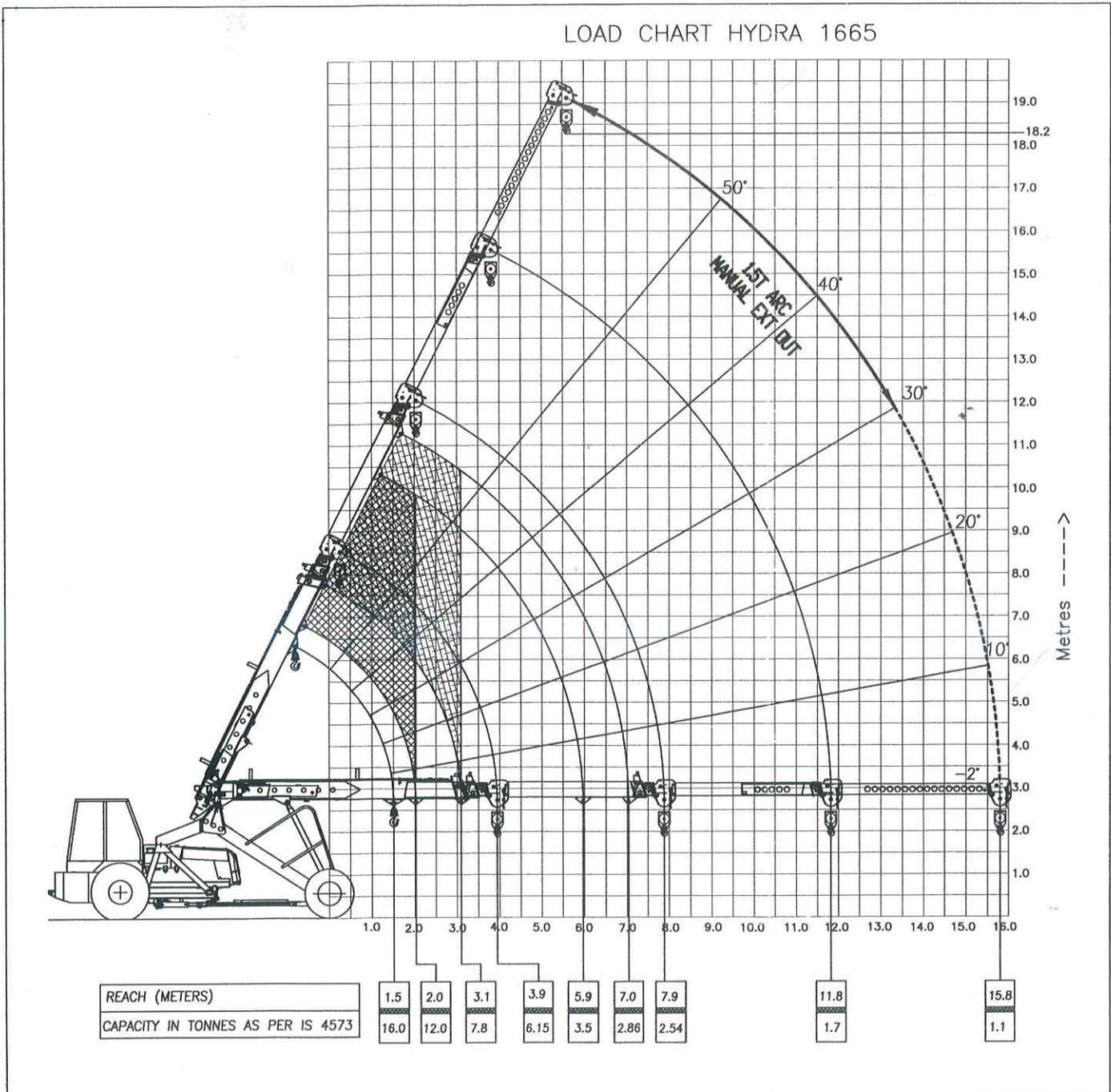
• Fly Jib • Fire Extinguisher • Spark Arrestor

• Air Conditioned Cabin • Steering Wheel

• Safe Load Indicator with hydraulic cut off

• Over Hoist & Over Load Cut off

Load Chart HYDRA 1665



The information contained in this leaflet is intended to be of general nature only. We reserve the right to change the specifications without any prior notice. All dimensions and weights are variable with in $\pm 2.5\%$



ESCORTS
CONSTRUCTION EQUIPMENT

Plot No. 219, Sector 58, Ballabgarh-121 004, Haryana, India
Tel.: +91 129 2306574, Fax: +91 129 2306463 | e-mail: ece.marketing@escorts.co.in | www.escortsece.com

Customer Support (Toll free) : 1800-180-1890

LIT / MKTG / HYDRA 1665 / 05-13