

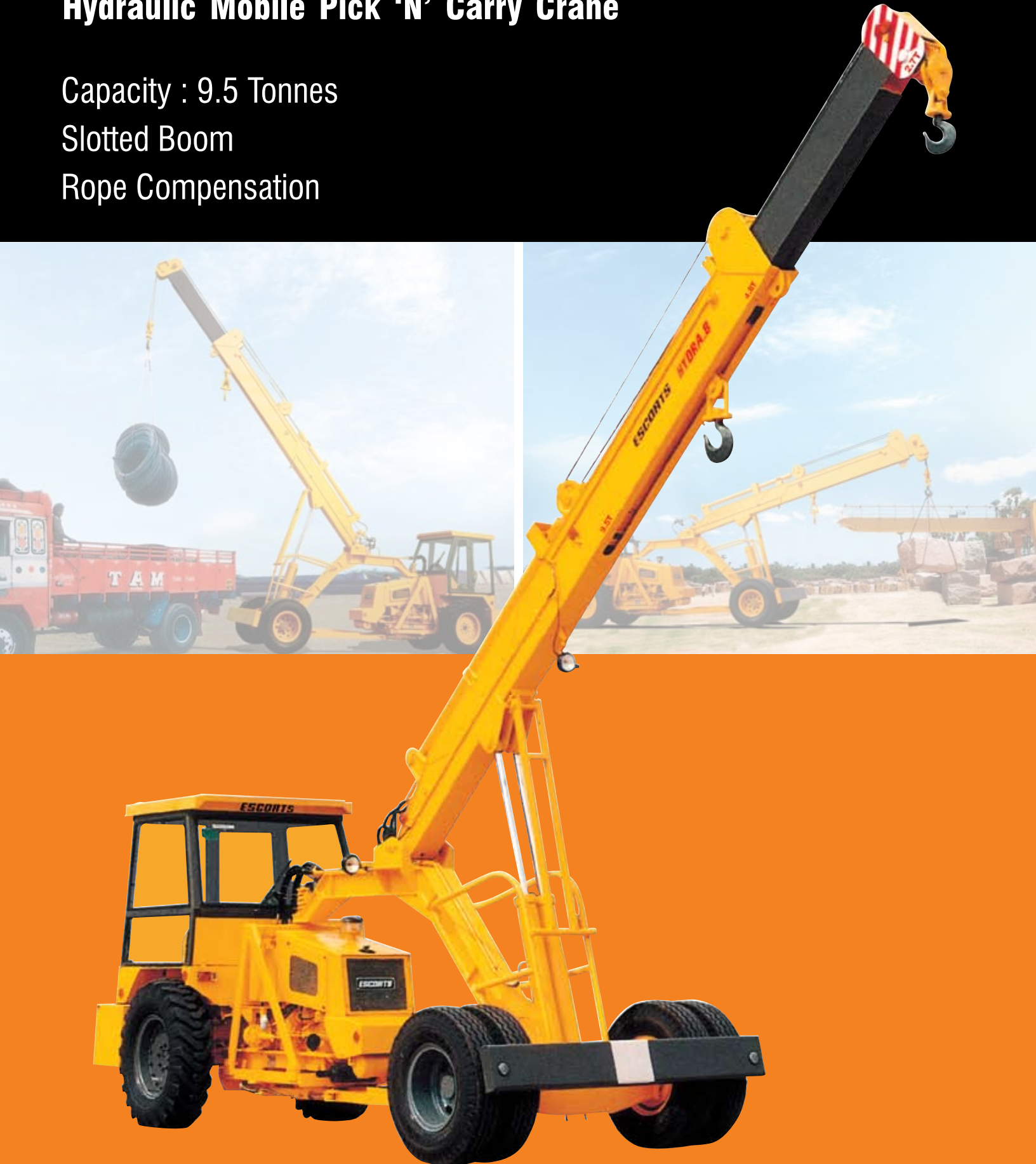
HYDRA-8

Hydraulic Mobile Pick 'N' Carry Crane

Capacity : 9.5 Tonnes

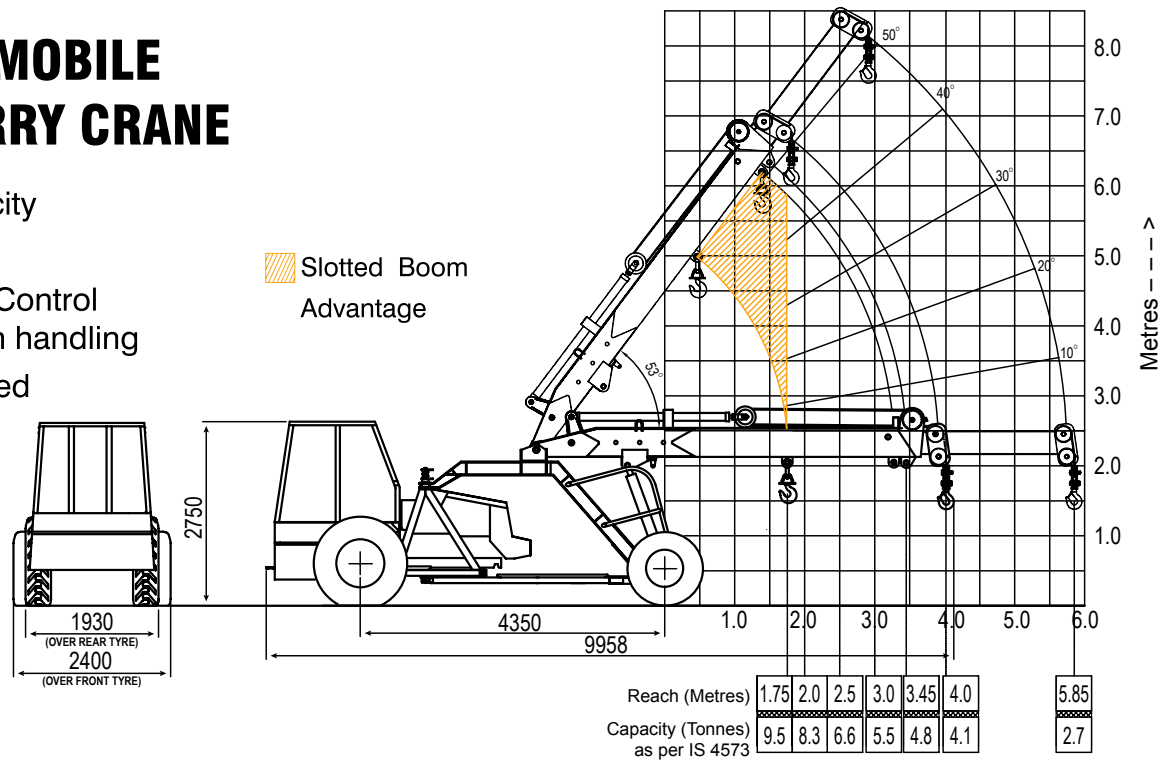
Slotted Boom

Rope Compensation



HYDRAULIC MOBILE PICK 'N' CARRY CRANE

- 9.5 Tonnes Capacity
- Slotted Boom
- New Technology Control Valve for precision handling
- Rope Compensated Hoist Hook.



SPECIFICATIONS

Engine	
Make & Model	Simpson S-433, Four Cylinder, Water Cooled Diesel Engine, Rated power for crane 49 BHP @ 2200 RPM (Max continuous engine rating 59 @ 2300 RPM) or equivalent Engine.

Transmission	
Type	Heavy duty transmission developed specially for crane application Sliding Mesh, spur teeth gearbox. Six forward and two reverse speeds with high and low selector lever.
Speed	Travel Speed 25 Kmph - restricted as per safety norms (without load)
Clutch	Single plate, heavy duty dry friction type clutch plate especially designed for crane application.

Steering	
Type	Articulated power steering, hydraulically controlled through 2 double acting jacks
Articulation	Upto 56°
Turning Radius	Minimum 5.2 m

Operational Timings (no load at rated engine RPM)	
Steering (lock to lock)	6-10 secs
Boom Raising	18-22 secs
Boom Lowering	14-18 sec
Telescoping	Extension in 7-9 sec Extension out 9-11 sec
Hoist Hook Speed	15m/min (Single line)

Brakes	
Front Wheel	Pneumatically assisted hydraulic brakes
Rear Wheel	Mechanical shoe brakes actuated through a slave cylinder
Parking	Mechanically actuated at rear wheels

Track	
Front	1880mm (centre of twin wheels)
Rear	1570mm (centre of wheels)

Front	10.00x20-16PR (Four Nos.)
Rear	13.00x24-12PR (Two Nos.)

Boom	
Telescoping	Heavy duty, Two part box type hydraulically operated
Derricking	Through double acting jacks.

Hoist Mechanism	
Hoist	Two falls, hydraulic cylinder. Rope dia 13mm. Rope compensated Hoist Hook.

Hydraulic System	
Pump	Pin Vane Type Hydraulic pump.
Control Valve	4 spool control valve with built in pressure relief valve for precision control.
Hydraulic Filter	Suction line has a 100 mesh inline strainer while return line has 25 micron full flow filter

Electrical System	
Type	12V Single battery, Negative earth

Capacities	
Fuel Tank	45 Ltrs.
Hydraulic Tank	90 Ltrs.
Axle Reduction	2.45 Ltrs.
Operating Weight (Kg)	8450

Safety System	
• Overload audio warning system	• Hose protection failure device
• Cylinder guard for protection	• Rope Compensation System

Standard Accessories		
• All weather cabin	• Front Bumper	• Reflectors
• Lift Cylinder Guard	• Rear View Mirror	• Turn & Reverse lamp

Optional Accessories		
• Fly jip: 4.1m length	• Fire Extinguisher	• Spark Arrestor
• Air Conditioned cabin	• Steering Wheel	• Extra hooks
• Safe load indicator with hydraulic cut-off		



ESCORTS CONSTRUCTION EQUIPMENT LIMITED

Plot No: 219, Sector-58, Ballabgarh, Faridabad (Haryana) - 121 004, India
 Tel.: (0129) 2306574/2306566, Toll free no :1800-180-1890, Fax: (0129) 2306463
 E-mail: marketing@escorts-ecl.com, Website: www.ecl.com