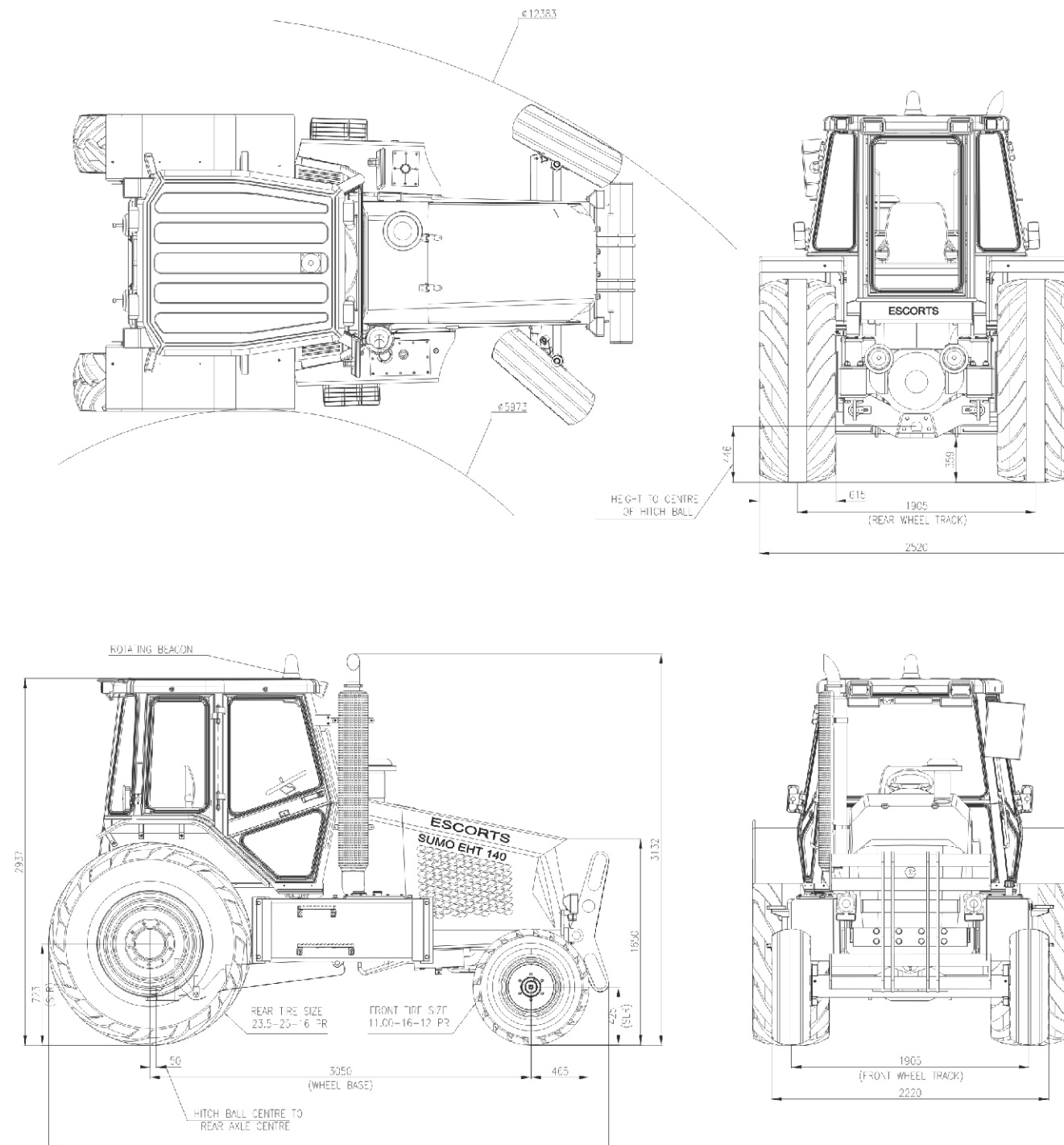


# SUMO EHT 140 TRACTOR Line Drawings

# HAULAGE TRACTOR



The information contained in this leaflet is intended to be of general nature only. We reserve the right to change the specifications without any prior notice. All dimensions and weights are variable with in  $\pm 2.5\%$

# SUMO EHT 140

For Reliable Hauling Solutions

Lowest Total Cost

Unmatched Stability



**POWERFUL • STABLE • RELIABLE**



Escorts Construction Equipment Limited Plot No. 219, Sector 58, Ballabgarh-121 004, Haryana, India  
Tel.: +91 129 2306566, Fax: +91 129 2306463 | e-mail: marketing@escorts-ecel.com | www.ecel.com

Customer Support (Toll free) : 1800-180-1890

LIT / MKTG / SUMO EHT 140/ 06-12

# SUMO EHT 140 TRACTOR Specifications

## ENGINE

Model	▶ Cummins 6B5.9 143C
Configuration	▶ Six-cylinder, in-line, water cooled
Aspiration	▶ Turbo charged
Displacement	▶ 5900 cc
Injection type	▶ Direct, In-line HP mechanical pump
Power Rating (at rated speed without fan)	▶ 147hp@220rpm
Maximum torque (Net, Nm @ RPM)	▶ 581@1300
Low Idle	▶ 950 rpm
High Idle	▶ 2550 rpm
Cylinder bore	▶ 102 mm
Stroke	▶ 120 mm
Compression Ratio	▶ 17.6:1

## TRANSMISSION

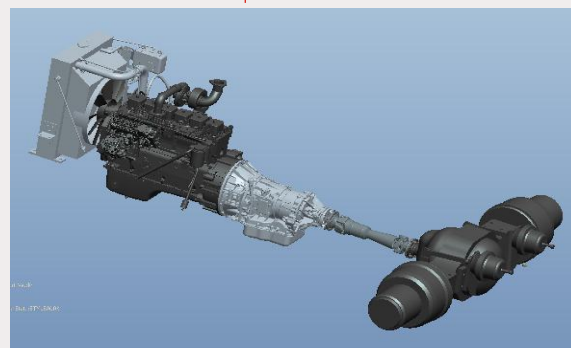
Model	▶ Allison #2500, TC 211
Layout	▶ Engine mounted with flex plate and coaxial rear output through planetary g/box
Gear layout	▶ Constant meshing planetary gears.
Clutch type	▶ Hydraulic operated, multiple disc
Control type	▶ Electronic control over hydraulic actuation.
Dry Weight	▶ 149
Torque converter layout	▶ Hydrodynamic with lock-up (L) in 2-6 gears and converter (C) mode in gears 1 & 2
Oil Cooler	▶ In series with radiator

## Max Theoretical Wheel Torque in Converter Mode

1st gear	▶ 79.4 kNm
2nd gear	▶ 43.0 kNm
3rd gear	▶ 32.6 kNm
4th gear	▶ 22.6 kNm
5th gear	▶ 16.7 kNm
6th gear	▶ 14.5 kNm
Reverse	▶ 115.0 kNm

## REAR AXLE (2WD)

Type	▶ MERITOR 13T, Steel Fabricated
Differential type	▶ Hypoid, 6.83:1
Hub reduction Ratio	▶ 3.46:1



Drive line: Cummins engine+ Allison Transmission +Meritor Fabricated design axle.

## BRAKING SYSTEM

Service Brake Type	▶ Type 24/75 pneumatic booster, heavy duty drum type, air activated S-cams and automatic slack adjuster on rear drive wheels.
Emergency Brake Type	▶ Hand control valve type fail safe brake on rear drive wheel only.

## FRONT AXLE

Type	▶ Heavy duty steel fabricated, Steered Axle (2WD)
------	---

## FRONT WHEELS

Tyre size and Type	▶ 11.00 X16 12 PR Multi Rib
Inflation Pressure	▶ 410 kPa
Maximum speed Rating	▶ 40 kmph
Rim Size	▶ 16.00x10.00 LB

## REAR WHEELS

Tyre size and Type	▶ 23.5-25 16 PR XL-GRIP E3/L3 TL
Inflation Pressure	▶ 225 kPa
Maximum speed Rating	▶ 40 kmph
Rim Size	▶ 25.00X19.50/2.5

## MACHINE SPEED (UNLADEN)

1st gear	▶ 7.2 kmph
2nd gear	▶ 15 kmph
3rd gear	▶ 40 kmph
4th gear	▶ 28.5 kmph
5th gear	▶ 38.5 kmph
6th gear	▶ 40.0 kmph (Limited)
Reverse	▶ 5.0 kmph

## SUSPENSION

Front	▶ Above-centre pivoted
Rear	▶ Rigid Mounted Axle

## GRADEABILITY

Max. Theoretical Drive line Gradability-25%



Heavy duty, torsion free, four plate box construction chassis for longer life reliability.

## HYDRAULIC SYSTEM

Type	▶ Open centre, Load sensing with Priority valve
Pump type & displacement	▶ Engine gear driven (1: 1 ratio), gear pump, 19.8 cc per revolution
Primary pump displacement (cc/ Rev)	▶ 19.8
Pump Application	▶ Power steering, hitch lift and trailer auxillary (2 function direct lever control valve)
Pump Flow @ engine	▶ 43.5 l/min@2200

## PNEUMATIC SYSTEM

Compressor Type	▶ Piston Type
System pressure	▶ 800 kPa
Compressor rating	▶ 352 litres/min
Air reservoir	▶ 30 Litres
Auxiliary (Trailer) air supply	▶ Special Trailer control valve with Palm coupler (Service and emergency) at vehicle rear

## OPTIONAL EQUIPMENT

Rear window mesh guard  
Belly Plates

## ELECTRICAL SYSTEM

Voltage	▶ 12 V
Battery type	▶ Maintenance free, sealed type
Starter motor rating	▶ 2.8 kW
Alternator rating	▶ 12/55 V/A
Battery rating	▶ 150 AH
Battery Isolator Switch	▶ Double pole type, accessible in cabin
Auxiliary (Trailer) electrical supply	▶ Standard trailer plug at vehicle rear
Fuse box	▶ Inside Cabin with function decal

## STEERING SYSTEM

Type	▶ Hydraulic power assisted with integrated priority valve
------	---

## COOLING SYSTEM

Engine cooler type	▶ Aluminium radiator water based, with series transmission oil cooler.
--------------------	--

## FLUID CAPACITIES

Fuel	▶ 200 litres
Hydraulic Oil (tank & system)	▶ 75 litres
Coolant	▶ 27.5 litres
Rear axle	▶ 44.0 litres
Engine crankcase Oil	▶ 18.0 litres
Transmission oil (and cooler)	▶ 14.0 litres



Heavy duty, Rugged, easy to operate Hitch Assembly.

## CAB

Type	▶ Heavy Duty, Fully enclosed, Tropical (with windscreen ) shaped with side access doors in LH & RH
Ventillation Seat	▶ Fresh air ventilated with roof fan ▶ Ergonomically Designed, Mechanical suspension cushioned seat with reclining & height adjustment, Arm rest Lap strap restraining belt.

## DASHBOARD-ROTOMOULDED LDPE

Type	▶ Electronic with fully display and warning system including fault logging on critical functions.
Needle Gauges	▶ Coolant Temperature, Vehicle speed (with overspeed warning light) Engine RPM, Air brake Pressure, Fuel Gauge, Digital hourmeter, Transmission Oil temperature (with warning light) Engine Oil Pressure Gauge (with low warning light)
Indicators	▶ Integrated Tell Tale indicators for turning, parking Brake, Transmission Inhibitor, Battery Charging; High engine oil Pressure, High Beam etc.

## OPERATING WEIGHT

### Unladen

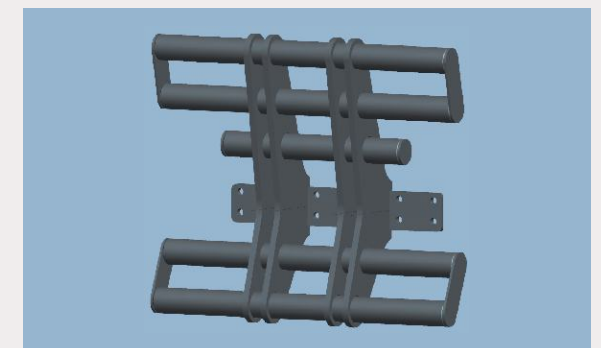
Front	▶ 2,440 Kgs
Rear	▶ 3,625 Kgs
Total	▶ 6,065 Kgs

### Fully Laden (5870kg hitch load)

Front	▶ 2,550 Kgs
Rear	▶ 9,400 Kgs
Total	▶ 11,950 Kgs
Hitch Load (Fully Laden)	▶ 5,870 Kgs
GCW	▶ 40,000 Kgs
Payload	▶ 33,935 Kgs

## STANDARD EQUIPMENT

Hydraulic Hitch with diameter 90 ball, Fleetguard air pre-cleaner, Front wind shield Guard



Aesthetically designed, Heavy duty, Impact resistant front dozer assembly.