



ESCORTS  
Construction Equipment



# ESCORTS F-15

Hydraulic Mobile Pick-n-Carry Crane



## ESCORTS LTD.

Plot No. 219, Sector 58, Ballabhgarh-121 004, Haryana, India  
Tel.: +91 129 2306567, Toll free: 1800-180-1890, Fax: +91 129 2306463  
e-mail: [ece.marketing@escorts.co.in](mailto:ece.marketing@escorts.co.in) [www.escortsece.com](http://www.escortsece.com)

LIT/AMTGF-1503-13/R

- Travel Long Distance on own Power
- Boom Height with Flyjib: 21m
- Heavy Duty Hoist Winch
- Front Mounted Cabin with Steering Wheel
- Slotted Boom with Self Compensating Snatch block
- New Technology Control Valve for Precision Handling
- 4 Wheel/ 2 Wheel Drive selector
- Dragging Winch with Outriggers (Optional)
- Safe Load Indicator with Hydraulic cutoff (Optional)

# SPECIFICATION F-15

## Rated Capacity

14 tonne at	1.50 m radius
900 Kg at	15.80 m radius
Max hook height	17.60 m

## Vehicle Performance

Speed	max 40 kmph
Gradeability	40% unladen

## Drive

4 wheel drive

## Engine

Diesel engine of VOLVO Eicher make, Model E483 TCIC, Turbo charged water cooled, developing 101 HP @ 2400 rpm or equivalent engine

## Transmission

Synchromesh gearbox with auxillary gearbox  
Speeds-10 forward and 2 reverse

## Clutch

Single, dry type friction clutch plate

## Brakes

Service: Fully air operated 'S' cam dual circuit brakes on front & rear axles

Parking: Air operated, spring actuated fail safe brakes

## Axles

Front - rigidly mounted

Rear - mounted with two semielliptical springs

## Tyres

8 nos. - 11x20 - 16 PR

## Hydraulic System

Main pump of 46 cc/rev,

Control Valve-3 spool double acting with a built in relief & auxillary valves

## Electrical System

24 V, DC

## Steering

Full power orbitrol with twin hydraulic double acting rams 40° articulation on either side

## Boom

4 part boom, 3 part hydraulically powered & fully synchronised. 4th part power extended and manually pinned for safety

## Hoist

Hydraulically operated with 4 falls  
Built in safety brakes

## Wheel Base

3.95 m

## Dimensions

Overall length	9725 mm
Overall width	2450 mm
Overall height	3215 mm

## Wheel Track

Front	1825 mm
Rear	1825 mm

## Operating Weight

Front Axle	6315 kg
Rear Axle	9000 kg
Total	15315 kg

## Turning Radius

7.2 m

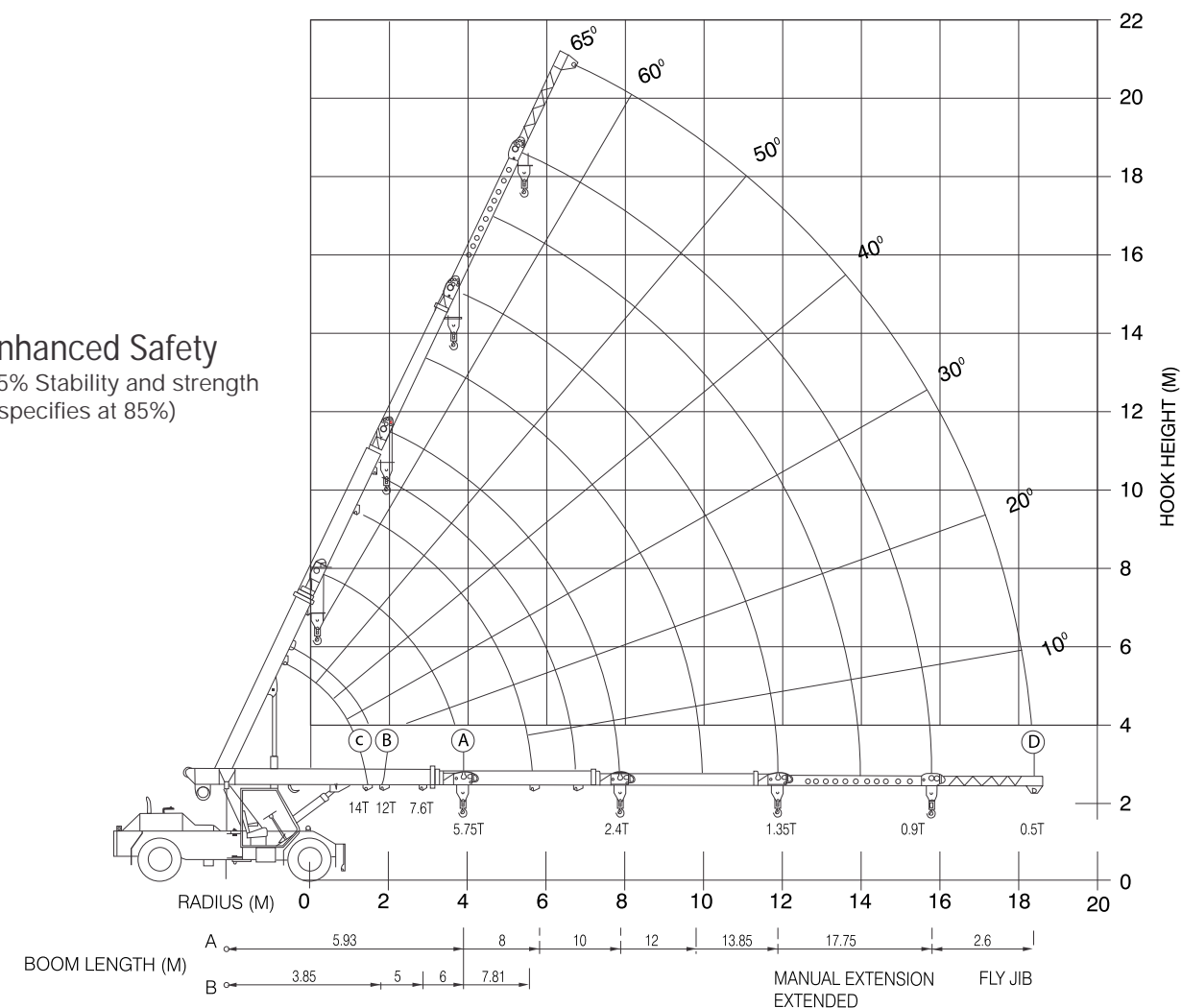
## Standard Accessories

All weather cabin with unrestricted visibility

## Optional Accessories

- 2.6 m fly jib
- Spare wheel
- Air conditioned cabin
- Safe load Indicator with hydraulic Cutoff
- RHINO Hook
- Man carrying basket (275 kg)
- Additional cabin
- 4x2 Wheel drive
- Outriggers
- Dragging Winch

**13.33% Enhanced Safety**  
SWL Based on 75% Stability and strength  
(IS 4573 specifies at 85%)



RADIUS (M)	(A)						(B)				(E)				(D)		
	BOOM LENGTH IN METRES- MANUAL EXTENSION RETRACTED						PIVOT TO INNER LUG 1ST JIB EXTN. MANUAL EXTN. MANUAL EXTN. RETRACTED				BOOM PIVOT TO OUTER LUG 1ST JIB EXTN. MANUAL EXTN. RETRACTED				RADIUS (M)	FLY JIB (BOOM FULLY EXTENDED)	
	5.93	8	10	12	13.85	17.75	3.85	5	6	7.81	4.97	6.5	7.5	8.93	6.4	750	
2	7500	7500	7500				12000	11000	11000	10550	2	11000	10500	10000	7500	8.0	750
3	7500	7500	6900	5200				7000	7000	6700	3	7600	7400	7300	6000	10.9	700
4	5750	5700	5070	4500	3970				4800	4750	4		5000	4900	4800	13.5	650
5		4400	4760	4000	3460	1680				3570	5			3800	3700	15.6	600
6		3600	3525	3475	3100	1575					6				3000	17.1	550
7			2900	2900	2750	1475					7			2300		18.0	500
8			2400	2478	2400	1400										18.4	500
9			2130	2080	1300												
10				1775	1250												
11				1550	1180												
12				1350	1135												
13					1110												
16					900												
18																	

- Radius is the horizontal Distance Measured from the center of front wheel to the load point
- S.W.L are based on firm level ground with tyres 11x20 - 16 ply rating to 115 PSI. Weight of hooks, blocks, slings & chain etc. included
- Lift & Carry - the S.W.L Shall be carried with the minimum boom length & as close to the ground as possible at speed not in excess of 2 kmph.
- Boom head mounted RHINO hook capacity - 6000 kg

All Dimension are in mm and are variable with in + 5%